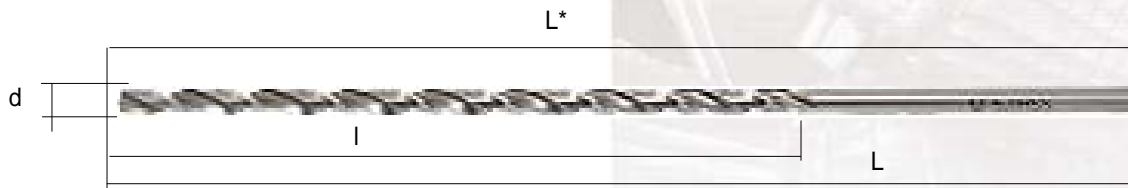


30

AB GRAŽTAI norms

Extralong parallel shank twist drills

For deep and hard-to-reach hole drilling in carbon, alloyed, constructional steels and cast iron



d		L* =8"		L* =10"		L* =12"		L* =18"		L* =24"			
		L	l	L	l	L	l	L	l	L	l		
Inches	mm	mm	mm	mm	mm	mm	mm	mm	mm	mm	mm		
5/32	3,97	204	141	255	192	306	230	458	357				
11/64	4,37												
3/16	4,76												
13/64	5,16												
7/32	5,56												
15/64	5,94	205	142	256	193	307	231	459	358	612	459		
1/4	6,35												
17/64	6,75												
9/32	7,14	206	143	257	194	308	232	460	359	613	460		
19/64	7,54												
5/16	7,94												
21/64	8,33												
11/32	8,73												
23/64	9,13												
3/8	9,52												
25/64	9,92												
13/32	10,32												
27/64	10,72												
7/16	11,11	207	144	258	194	309	233	461	360	614	461		
29/64	11,51												
15/32	11,91	207	144	258	194	309	233	461	360	614	461		
31/64	12,30												
1/2	12,70												
33/64	13,10												
17/32	13,49												
35/64	13,89												
9/16	14,29												
37/64	14,68												
19/32	15,08												
39/64	15,48												
5/8	15,87												
41/64	16,27												
21/32	16,67												
11/16	17,46												
45/64	17,86												
23/32	18,26												
3/4	19,05												
25/32	19,84	310	234	462	361	615	462						
13/16	20,64												
27/32	21,43												
7/8	22,22												
29/32	23,02												
15/16	23,81												
31/32	24,61												
1	25,40												
								311	235	463	362	617	464
		312	236	464	362								